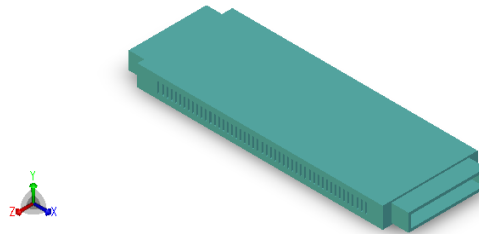


POWER GENERATION USING MHD - PMG

An example implementation for power generation would consist of a pipe or tube ("*plasma tube*") of some non-conductive material. Inside the walls of this pipe an array of charged electrical contacts are installed.

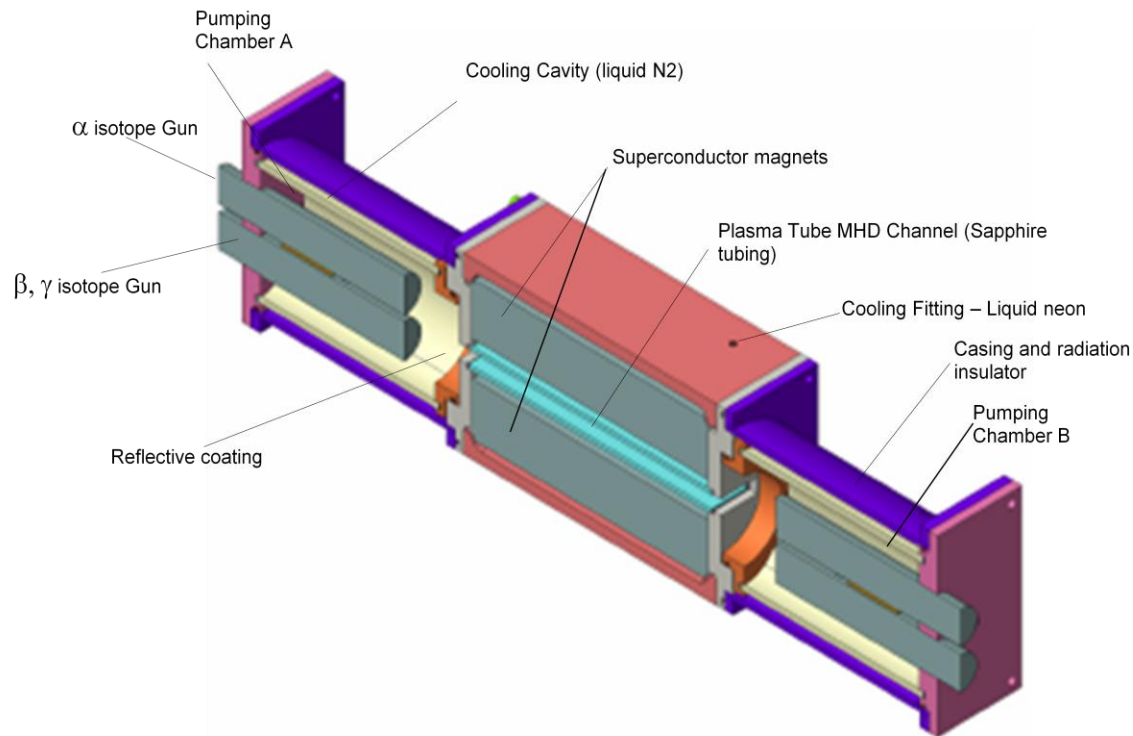


There are some limitations that must be met on the density and the type of field used. When an electrically conductive substance flows through the tube, a change is induced in the field, which can be drawn off as electrical power.

The amount of power that can be extracted in this manner is proportional to the cross sectional area of the tube and the speed at which the conductive substance flows. The conductive substance is also cooled and slowed in this process. The flow of the conductive substance must be at a right angle to the extraction field.

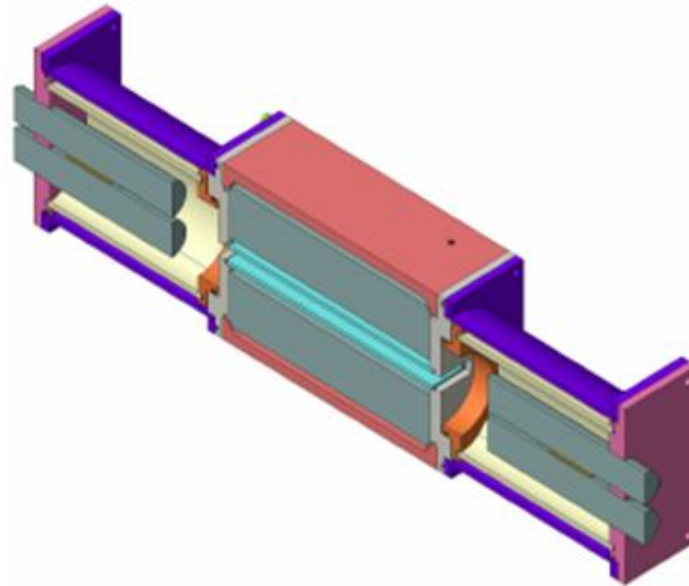
In the case of the MPG cells, the respective tube, described above, called the *plasma tube* is connected to two sealed chambers (see below).

A gas mix of pre-charged gases and nano materials, at a given design pressure, in the system are exposed to atomic changes due to exposure to alpha (α), gamma (γ) and beta (β) emitting radiation, and some X-ray. As in the case of the heat-pumps, the charges are manipulated so the electricity conductive gas mix is raised to plasma temperatures in one chamber and cooled down into the second chamber, so the flow is established along the tube that the medium gases is exposed to the magnetic field and electricity extraction electrodes. Further speed and inertia is given to the heated exited chamber due to internal Hall Effects.



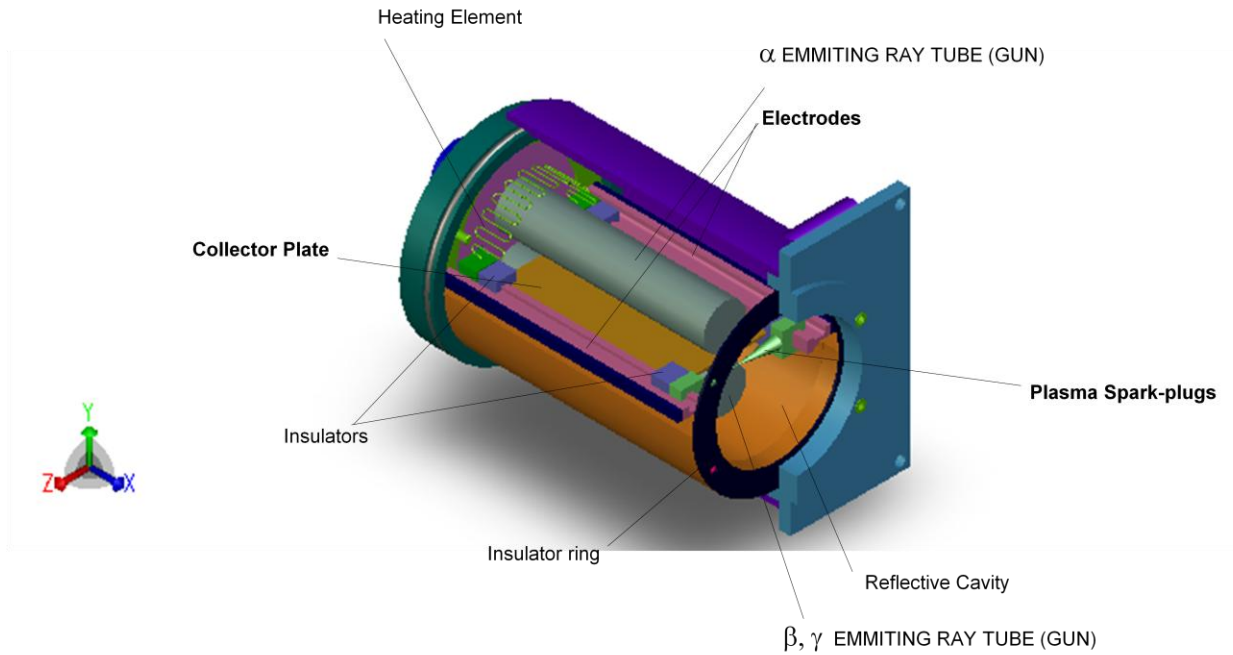
TECHNOLOGY LICENSED BY PEEKER CORPORATION

Since the process is cycled back and forth between the two chambers and along the plasma tube, the exposure of the electricity conductive gas medium is measured in miles per minute.



The alpha (α) radiation produced in the system will be restricted inside the unit as alpha rays can be stopped by a simple piece of paper. Beta (β) rays will radiate around 2 inches and are contained inside the generators by the shear protection of the ceramic and metal walls and shield material. The gamma (γ) rays and UV radiation are also contained inside the pumping chamber and reflected by the gold/silver A/R coating, while the small amount of X-rays is insulated by thin lead or alike coating outside the immediate chambers.

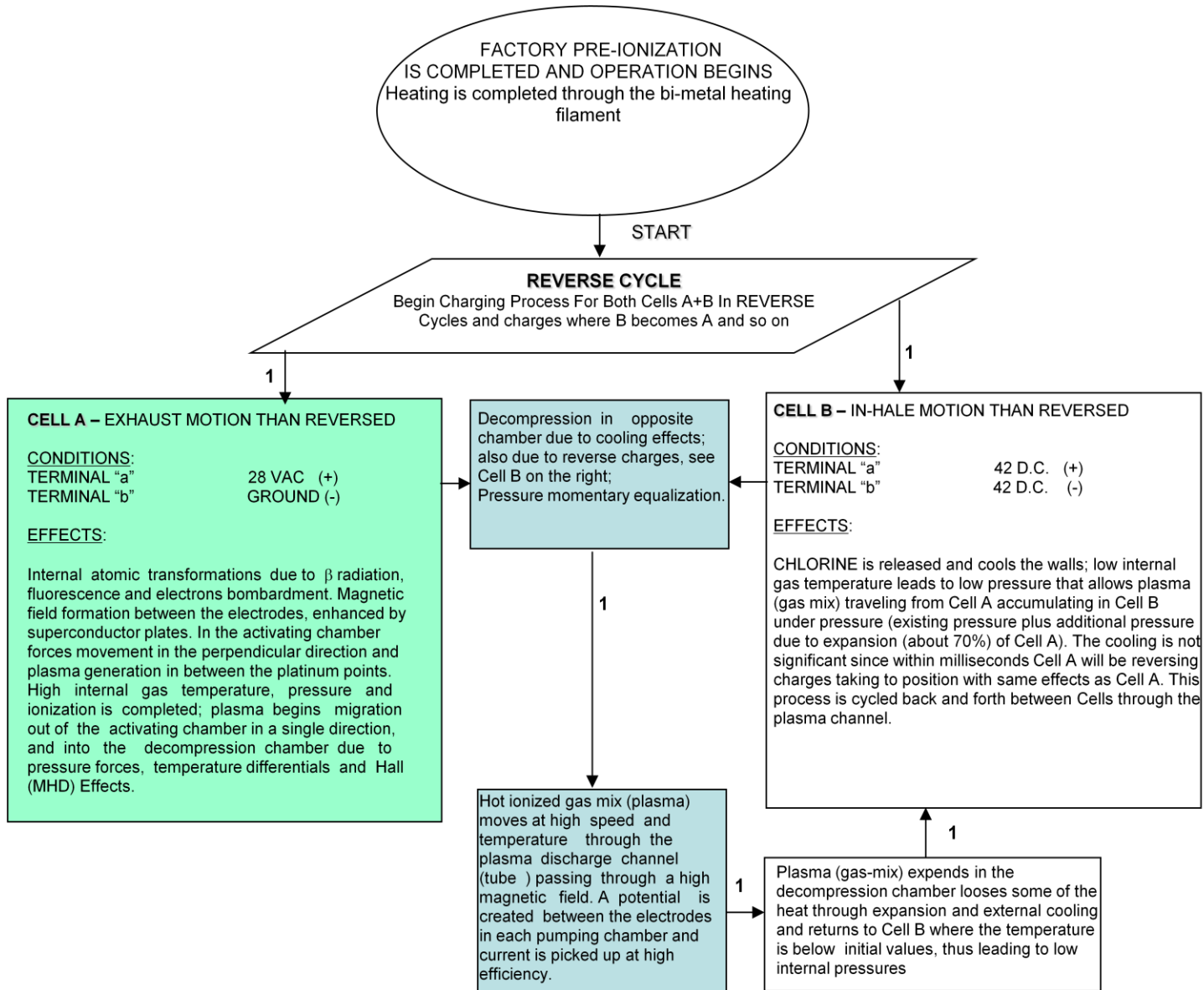
PUMPING UNIT



TECHNOLOGY LICENSED BY PEEKER CORPORATION

The environment inside the closed system is formed of noble gases, such as argon, neon, helium, xenon, and/or krypton, and a percent of de-oxygenated, de-mineralized, water void of air and free hydrogen.

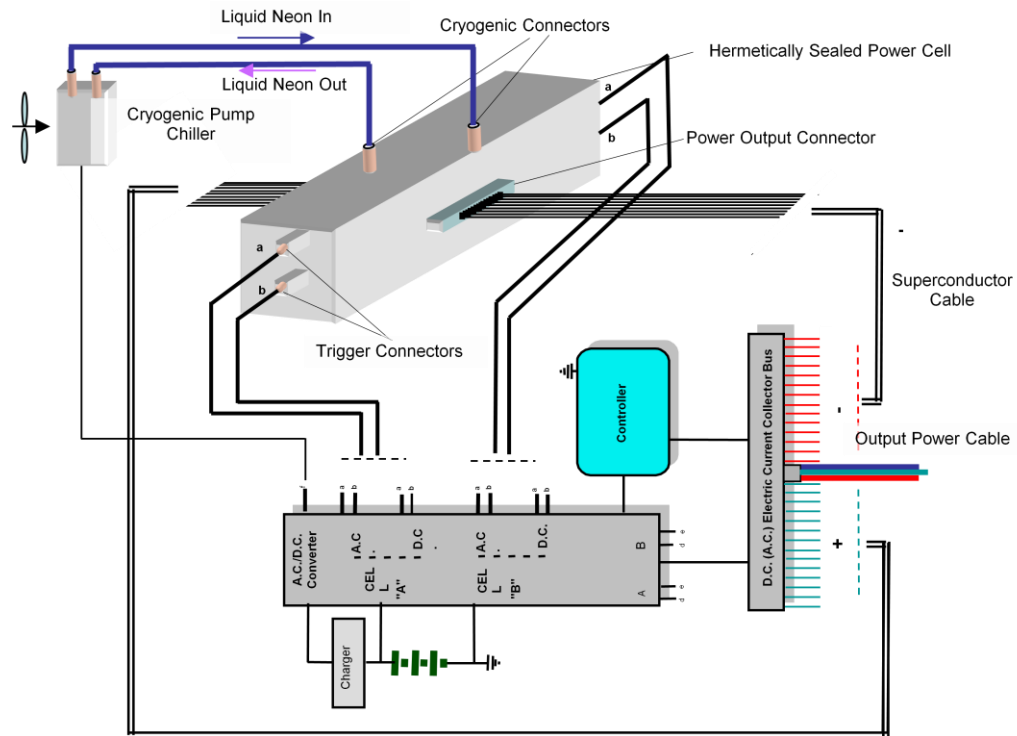
OPERATION - GENERAL



OPERATION

During operation, a certain amount of fluorescence and luminosity is highly desirable within the cavity. To stimulate such fluorescence and emanation from the activating cells, the cells are sequentially supplied with current. Electrons emissions are therefore stimulated or induced and the electrons from one emitting ray tube are attracted toward the other, the flow of these electrons resulting in electric current. In addition, the presence of the quantum nano dots also increase luminescence and in some cases may also increase focusing and lasing when required in the cavity expansion mode. The strength or the potential of this current is increased by the presence of the noble gases in the cavity as well as their quantity and pressure within each cavity. The flow of current between activating cells will be sufficiently accelerated to create collision of the electrons in the flow with molecules and atoms causing fission of the neutral gas atoms and particles, thus permitting them to carry a greater electrical charge (collision ionization). In general this mechanism should result in a significant degree of ionization even in the absence of any UV- radiation sources.

TYPICAL ARRANGEMENT FOR A 1 MW PMG GENERATOR (WITH A UPS BACK-UP)



The Sealed Power Cell is supplied with DC and AC current trigger through the AC/DC Controller. A cryogenic small pump is provided to supply the liquid neon/nitrogen which cools the superconductors in the system and also cools down the plasma tube (plasma channel) inside of the power cell. The current collected by the plasma channel electrons is transmitted via superconductor cables to the DC Electric Current collector bus; this is rectified and the final DC current is sent to a DC/AC HV Inverter.